



REVIEWED

By Primary User at 11:14 am, Jan 14, 2022

Worklist: 5476

<u>LAB CASE</u>	<u>ITEM</u>	<u>ITEM TYPE</u>	<u>DESCRIPTION</u>	
M2021-5132	2	BCK	AM 25/AM 26 Blood MultiDrug/THC Screen by LC-QQQ	
M2021-5188	1	BCK	AM 25/AM 26 Blood MultiDrug/THC Screen by LC-QQQ	
M2021-5396	2	BCK	AM 25/AM 26 Blood MultiDrug/THC Screen by LC-QQQ	
M2021-5469	2	BCK	AM 25/AM 26 Blood MultiDrug/THC Screen by LC-QQQ	
M2021-5472	2	BCK	AM 25/AM 26 Blood MultiDrug/THC Screen by LC-QQQ	
M2021-5498	2	BCK	AM 25/AM 26 Blood MultiDrug/THC Screen by LC-QQQ	
M2021-5619	2	BCK	AM 25/AM 26 Blood MultiDrug/THC Screen by LC-QQQ	
P2021-3682	1	BCK	AM 25/AM 26 Blood MultiDrug/THC Screen by LC-QQQ	
P2021-4072	1	BCK	AM 25/AM 26 Blood MultiDrug/THC Screen by LC-QQQ	
P2021-4079	1	BCK	AM 25/AM 26 Blood MultiDrug/THC Screen by LC-QQQ	
P2021-4080	1	BCK	AM 25/AM 26 Blood MultiDrug/THC Screen by LC-QQQ	
P2021-4090	1	BCK	AM 25/AM 26 Blood MultiDrug/THC Screen by LC-QQQ	
P2021-4150	1	BCK	AM 25/AM 26 Blood MultiDrug/THC Screen by LC-QQQ	
P2021-4164	1	BCK	AM 25/AM 26 Blood MultiDrug/THC Screen by LC-QQQ	
P2021-4169	1	BCK	AM 25/AM 26 Blood MultiDrug/THC Screen by LC-QQQ	
P2021-4170	1	BCK	AM 25/AM 26 Blood MultiDrug/THC Screen by LC-QQQ	
P2021-4171	1	BCK	AM 25/AM 26 Blood MultiDrug/THC Screen by LC-QQQ	
P2021-4172	1	BCK	AM 25/AM 26 Blood MultiDrug/THC Screen by LC-QQQ	
P2021-4175	1	BCK	AM 25/AM 26 Blood MultiDrug/THC Screen by LC-QQQ	
P2021-4183	1	BCK	AM 25/AM 26 Blood MultiDrug/THC Screen by LC-QQQ	
P2021-4184	1	BCK	AM 25/AM 26 Blood MultiDrug/THC Screen by LC-QQQ	

Worklist: 5476

<u>LAB CASE</u>	<u>ITEM</u>	<u>ITEM TYPE</u>	<u>DESCRIPTION</u>	
P2021-4192	1	BCK	AM 25/AM 26 Blood MultiDrug/THC Screen by LC-QQQ	
P2021-4193	1	BCK	AM 25/AM 26 Blood MultiDrug/THC Screen by LC-QQQ	
P2021-4194	1	BCK	AM 25/AM 26 Blood MultiDrug/THC Screen by LC-QQQ	
P2021-4195	1	BCK	AM 25/AM 26 Blood MultiDrug/THC Screen by LC-QQQ	
P2021-4196	1	BCK	AM 25/AM 26 Blood MultiDrug/THC Screen by LC-QQQ	
P2021-4203	1	BCK	AM 25/AM 26 Blood MultiDrug/THC Screen by LC-QQQ	
P2021-4204	1	BCK	AM 25/AM 26 Blood MultiDrug/THC Screen by LC-QQQ	
P2021-4208	1	BCK	AM 25/AM 26 Blood MultiDrug/THC Screen by LC-QQQ	



AM# 25: Multi-Drug Screen in Blood and Urine by LC-MS/MS

Extraction Date: 12/28/2021

Plate lot#: 211015

Mobile phase A: 10mM Amm Form
Instant Buffer I

Blank Blood Lot: Lampire 20L20725

LCMS-QQ ID: 069901

Analyst: Amber Gerheart

Plate Retest Date: 4/15/2022

Mobile phase B: 0.1% Formic Acid in MeOH
Ethyl Acetate LC Methanol

Column: Phenomenex Phenyl Hexyl (4.6x50mm, 2.6um)

Blank Urine Lot: N/A

Pre-Analytic:

- 1. Check levels of mobile phases and needle wash refill as needed. Ensure waste is not full.
- 2. Ensure correct column is installed and begin mobile phase flow allow to equilibrate ~ 30 minutes.

Analytic:

- 1. Remove standards, plate, controls, and samples from cold storage. Allow to reach room temperature.
- 2. Urine Hydrolysis: In blank well, add 250µL urine, 40µL BG Turbo, and 100µL Instant Buffer I. Place on plate shaker for 5 minutes.
- 3. Using a calibrated pipette, pipette **250µL blood and urine** (if applicable) into wells of analytical (standards) plate.
Pipette ID: 42
- 4. Place on shaking incubator at ambient temp., 900rpm for 15 minutes.
- 5. Pipette **250µL 0.5 M ammonium hydroxide** in wells of analytical plate.
- 6. Place on shaking incubator at ambient temp., 900rpm for 15 minutes.
- 7. Transfer **200-450µL of blood+base and urine+base (if applicable)** mixture to corresponding wells of SLE+ plate.
Amount transferred: 300µL
- 8. Apply positive pressure for approx. 10-15 seconds (or until no liquid remains on top of sorbent).
(Load at 85-100 PSI- Selector to the right).
- 9. Wait 5 minutes.
- 10. Add **900uL ethyl acetate.**
- 11. Wait 5 minutes.
- 12. Apply positive pressure for approx. 15 seconds. **(10-15 PSI- Selector to the left).**
- 13. Add **900uL ethyl acetate.**
- 14. Wait 5 minutes.
- 15. Apply positive pressure for approx. 15 seconds. **(10-15 PSI- Selector to the left).**
- 16. Remove plate containing eluate. Place on SPE Dry and evaporate to dryness at approx. 35°C. If run contains urine, add 50µL 1% HCl in MeOH to wells and place plate cover on plate before drying.
- 17. Reconstitute in **100µL 20% LC MeOH** and heat seal plate with foil. Place in autosampler and run worklist.

Post-Analytic

- 1. Open quantitation software and create a new quantitation batch.
- 2. Make necessary changes to integration limits
- 3. Evaluate samples, S/N of primary transition >5 and S/N of secondary transition >3 or evaluation of peak symmetry and resolution. Within +/- 2% or 0.1 min RT of administrative control. Calculated concentration of 5 or greater or 2-5 for discretionary range.
- 4. Did all QCs pass for each analyte? If no, describe issue in comments (below).
- 5. Central File Packet to include: LIMS Worklist, Method Checklist, Calibration and Control Reports

COMMENTS:

Fluoxetine, paroxetine, phentermine, and sertraline not evaluated.

Plate extracted on 12/28/2021 and stored in the freezer overnight. Analyzed on the instrument on 12/29/2021.

Instrument stopped before injecting P2021-4184-1. Run was resumed with no issues on 12/29/2021.

	1	2	3	4	5	6	7	8	9	10	11	12
A	IS + QC_1	M2021-5498-2	P2021-4164-1	P2021-4192-1	IS + Sample	IS + Sample	IS + Sample	IS + Sample	IS + Sample	IS + Sample	IS + Sample	IS + Sample
B	IS + QC_1	M2021-5619-2	P2021-4169-1	P2021-4193-1	IS + Sample	IS + Sample	IS + Sample	IS + Sample	IS + Sample	IS + Sample	IS + Sample	IS + Sample
C	Blood Negative	P2021-3682-1	P2021-4170-1	P2021-4194-1	IS + Sample	IS + Sample	IS + Sample	IS + Sample	IS + Sample	IS + Sample	IS + Sample	IS + Sample
D	M2021-5132-2	P2021-4072-1	P2021-4171-1	P2021-4195-1	IS + Sample	IS + Sample	IS + Sample	IS + Sample	IS + Sample	IS + Sample	IS + Sample	IS + Sample
E	M2021-5188-1	P2021-4079-1	P2021-4172-1	P2021-4196-1	IS + Sample	IS + Sample	IS + Sample	IS + Sample	IS + Sample	IS + Sample	IS + Sample	IS + Sample
F	M2021-5396-2	P2021-4080-1	P2021-4175-1	P2021-4203-1	IS + Sample	IS + Sample	IS + Sample	IS + Sample	IS + Sample	IS + Sample	IS + Sample	IS + Sample
G	M2021-5469-2	P2021-4090-1	P2021-4183-1	P2021-4204-1	IS + Sample	IS + Sample	IS + Sample	IS + Sample	IS + Sample	IS + Sample	IS + Sample	IS + QC_1
H	M2021-5472-2	P2021-4150-1	P2021-4184-1	P2021-4208-1	IS + Sample	IS + Sample	IS + Sample	IS + Sample	IS + Sample	IS + Sample	IS + Sample	IS + QC_1

All wells to contain 60 µl of residual DMSO

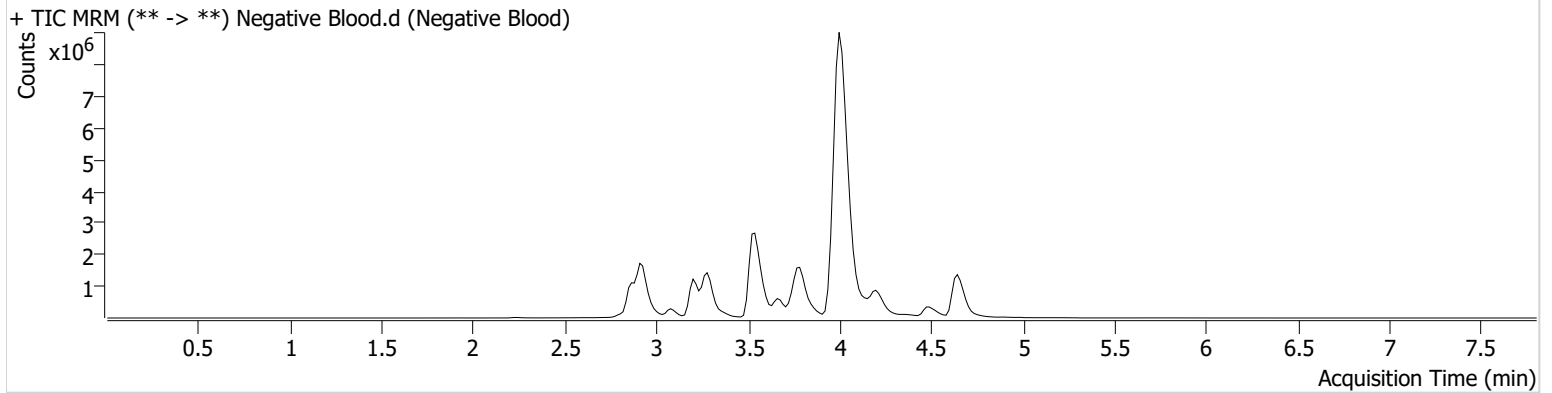
AM #25 Multi-Drug Screen Results



Batch results D:\MassHunter\Data\2021\AM 25-26\122921 AM 25 26 AG\QuantResults\AM 25.batch.bin
Calibration Last Update 1/13/2022 7:55:50 AM

Instrument	Falco (069901)	Data File	Negative Blood.d
Type	Sample	Sample	Negative Blood
Acq. Method	AM 25 MDS.m	Operator	Amber Gerheart
Sample Position	P2-C1	Comment	
Injection Volume	5		
Acq. Date-Time	12/29/2021 12:29:17 PM		
Sample Info.			

Sample Chromatogram



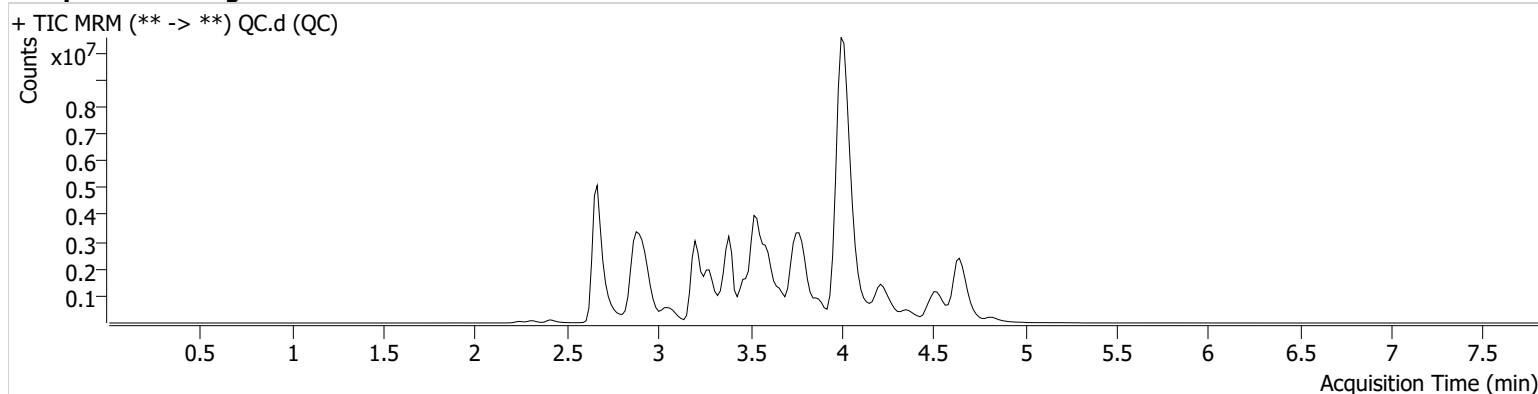
AM #25 Multi-Drug Screen Results



Batch results D:\MassHunter\Data\2021\AM 25-26\122921 AM 25 26 AG\QuantResults\AM 25.batch.bin
Calibration Last Update 1/13/2022 7:55:50 AM

Instrument	Falco (069901)	Data File	QC.d
Type	Cal	Sample	QC
Acq. Method	AM 25 MDS.m	Operator	Amber Gerheart
Sample Position	P2-A1	Comment	
Injection Volume	5		
Acq. Date-Time	12/29/2021 12:20:44 PM		

Sample Chromatogram



Name	RT	Resp.	S/N	S/N	ISTD Resp.	Calc. Conc.
6-MAM	2.847	7660	2489.37	3389.55	199849	10.0000
7-aminoclonazepam	3.587	395641	209.21	∞	1672722	10.0000
7-aminoflunitrazepam	3.787	1281707	551306.28	52.24	1672722	10.0000
Acetyl Fentanyl	3.752	16641	5013.93	12094.17	5283113	10.0000
Acetyl Norfentanyl	2.856	58660	23.40	274.07	5283113	10.0000
a-hydroxyalprazolam	4.490	63326	699239.35	∞	1672722	10.0000
alpha-hydroxymidazolam	4.581	312803	45.18	∞	1672722	10.0000
Alpha-PHP	3.760	863265	67320.75	3326.73	5283113	10.0000
alpha-PVP	3.485	1736857	708.86	162.87	315685	10.0000
Alprazolam	4.616	1323604	572.87	480.60	6636947	10.0000
Amitriptyline	4.374	30663	43.66	30.06	117088	10.0000
Amphetamine	2.844	117033	541.29	142.98	315685	10.0000
Benzoylcegonine	3.387	117076	153926.72	15335.85	217033	10.0000
Brompheniramine	3.968	5076	1350.30	30217.42	7982472	10.0000
Buprenorphine	4.224	22008	901.93	2198.69	88344	10.0000
Bupropion	3.684	593188	1012.10	174635.47	2087343	10.0000
Carbamazepine	4.223	2401584	562.38	203.86	9421	10.0000
Carisoprodol	4.206	53264	77.48	39.10	270238	10.0000
Chlordiazepoxide	4.694	315713	120.18	152540.63	6636947	10.0000
Chlorpheniramine	3.896	588218	98.43	10.25	7982472	10.0000
Citalopram	4.014	224289	139290.58	18199.77	7982472	10.0000
Clomipramine	4.553	31158	15585.47	75.38	7982472	10.0000
Clonazepam	4.430	22095	13344.97	5.54	6636947	10.0000
Clonazolam	4.365	522862	244555.38	163.99	6636947	10.0000
Cocaethylene	3.737	2402592	1093466.52	2863.32	11695650	10.0000
Cocaine	3.539	2013811	14691.73	422.45	11695650	10.0000
Codeine	2.760	63433	55103.80	578.82	2180282	10.0000
Cyclobenzaprine	4.297	56048	49.63	4.51 Low	117088	10.0000
Desipramine	4.329	46901	24.69	10.13	117088	10.0000
Dextromethorphan	4.035	127710	90807.14	59027.73	716830	10.0000
Dextrorphan	3.343	457664	393.07	207.91	716830	10.0000
Diazepam	4.834	362355	1003.79	280.39	6636947	10.0000
Dihydrocodeine	2.713	240406	252.57	1495.88	2180282	10.0000
Diphenhydramine	3.974	788009	161173.47	34491.11	7982472	10.0000

QC

AM #25 Multi-Drug Screen Results



Name	RT	Resp.	S/N	S/N	ISTD Resp.	Calc. Conc.
Doxepin	4.096	70672	43.17	12.83	2175152	10.0000
Doxylamine	3.603	3850749	751029.45	1609.81	716830	10.0000
EDDP	4.049	370676	84.38	324.07	1223308	10.0000
Estazolam	4.525	2079459	475.14	150142.63	6636947	10.0000
Etizolam	4.626	204007	110251.03	600801.05	6636947	10.0000
Fentanyl	3.982	8020	2852.78	2727.49	763675	10.0000
Flualprazolam	4.490	326415	187536.84	392067.12	6636947	10.0000
Flunitrazepam	4.554	66868	42.44	2151.30	6636947	10.0000
* Fluoxetine	4.293	9993	19.63		22337	10.0000
Flurazepam	4.087	285987	69125.67	30099.60	6636947	10.0000
Hydrocodone	2.943	343929	5145.99	317.43	2180282	10.0000
Hydromorphone	2.412	205617	607.41	220747.57	55915	10.0000
Imipramine	4.342	118737	159.13	34.05	117088	10.0000
Ketamine	3.360	1425139	75.93	272.15	4179801	10.0000
Lamotrigine	3.497	96139	13400.27	8944.57	7982472	10.0000
Levamisole	2.902	1809774	3920.87	1056.27	11695650	10.0000
Levetiracetam	2.644	161578	31409.54	596.12	7982472	10.0000
Lorazepam	4.429	79501	78.42	30.34	6636947	10.0000
Maprotiline	4.374	14999	9.97	5000.43	117088	10.0000
MDA	2.964	47355	42.05	33.50	3860514	10.0000
MDEA	3.193	827415	369.44	191.25	3860514	10.0000
MDMA	3.041	1003291	370.83	1348.10	3860514	10.0000
Meperidine	3.544	540893	119784.35	98724.23	716830	10.0000
Meprobamate	3.655	9231	5.95	1032.72	270238	10.0000
Methadone	4.355	411664	622.73	458.72	1223308	10.0000
Methamphetamine	2.951	741789	1543.25	748.49	3860514	10.0000
Methocarbamol	3.576	8937	4139.35	22688.67	1223308	10.0000
Methylphenidate	3.469	2741716	102.11	76.68	889791	10.0000
Metoprolol	3.404	101506	110456.84	315.59	716830	10.0000
Midazolam	4.689	132798	41882.20	95.99	6636947	10.0000
Mirtazapine	3.727	366187	940.32	705725.57	716830	10.0000
Mitragynine	4.117	26677	15641.17	18483.28	716830	10.0000
Morphine	2.246	51512	1216.71	31066.44	55915	10.0000
Norbuprenorphine	3.779	972	804.13	4.42 Low	88344	10.0000
Nordiazepam	4.682	88274	98.39	57.80	6636947	10.0000
Norfentanyl	3.300	1130215	11642.83	98.07	5283113	10.0000
Norhydrocodone	2.898	16921	30.25	51.68	55915	10.0000
Norketamine	3.377	96428	13156.32	883.52	4179801	10.0000
Normeperidine	3.561	101664	193.29	35.87	7982472	10.0000
Noroxycodone	2.850	145309	46.57	96.87	4179801	10.0000
Nortriptyline	4.345	11203	2783.64	1687.09	117088	10.0000
O-desmethyl-tramadol	2.884	4061353	4877.88	558.79	7982472	10.0000
Olanzapine	3.646	83174	32289.28	5572.73	9421	10.0000
Oxazepam	4.495	317572	2539.81	98.19	1405666	10.0000
Oxycodone	2.879	1098608	526.76	993.32	4179801	10.0000
Oxymorphone	2.302	199205	3633.68	1038.84	55915	10.0000
Phenazepam	4.626	137196	45074.23	1449.74	6636947	10.0000
Phencyclidine	3.883	1072698	350.54	236.23	716830	10.0000
* Phentermine	3.104	63260	9.30	1.89 Low	889791	10.0000
Phenytoin	4.114	15567	11039.97	1715.86	9421	10.0000
Promethazine	4.265	165028	50.20	42.74	7982472	10.0000
Pseudoephedrine	2.675	17045619	734.93	666.55	3860514	10.0000
Quetiapine	4.272	389220	563977.74	61476.94	32094258	10.0000
* Sertraline	4.524	5347	1700.49		22337	10.0000
Sufentanil	4.272	4913	6087.20	61.33	5283113	10.0000
Tapentadol	3.393	1461757	334.31	213.19	4179801	10.0000
Temazepam	4.664	1100949	3535.11	96.28	6636947	10.0000
Tramadol	3.389	4250111	406.54	397.82	7982472	10.0000
Trazodone	4.242	699038	289019.82	369.00	2175152	10.0000
Venlafaxine	3.741	1926360	331.40	344.61	22337	10.0000

QC



AM #25 Multi-Drug Screen Results

Name	RT	Resp.	S/N	S/N	ISTD Resp.	Calc. Conc.
Zaleplon	4.356	38632	25502.20	29.84	32094258	10.0000
Zolpidem	4.016	4514789	11660.61	633182.38	32094258	10.0000
Zopiclone	3.857	101567	120302.11	20356.01	486214	10.0000

*Compounds not evaluated



AM# 26: Screening of THC and Metabolites in Blood and Urine by LC-MS/MS

Extraction Date: 12/28/2021

Analyst: Amber Gerheart

Plate lot#: 211018

Plate Retest Date: 4/18/2022

Mobile phase A: 0.1% Formic Acid in LCMS Water

Mobile phase B: 0.1% Formic acid in Acetonitrile

Blank Blood Lot: Lampire 20L20725

Column: Phenomenex Phenyl Hexyl (4.6x50mm, 2.6um)

LCMS-QQ ID: 069901

Blank Urine Lot: N/A

Pre-Analytic:

- 1. Check levels of mobile phases and needle wash refill as needed. Ensure waste is not full.
- 2. Ensure correct column is installed and begin mobile phase flow allow to equilibrate ~ 30 minutes.

Analytic:

- 1. Remove standards, plate, controls, and samples from cold storage. Allow to reach room temperature.
- 2. Urine hydrolysis: add 1.5mL urine to blank plate, add 250µl 1N KOH. Shake and incubate at 40 degrees for 15 minutes.
Using a calibrated pipette, add **1000µl blood and urine (if applicable) (calibrated pipette)** into the appropriate wells of analytical (standards) plate. **Pipette ID: 16**
- 3. Place on shaking incubator at ambient temp., 900rpm for 15 minutes.
- 4. Pipette **500µL 0.1% formic acid in water blood sample, 500 µL saturated phosphate buffer in urine** in wells of analytical plate.
- 5. Place on shaking incubator at ambient temp., 900rpm for 15 minutes.
- 6. Transfer **700-800µL of blood+acid or urine+acid** mixture to corresponding wells of SLE+ plate.
Amount transferred: 800µL
- 7. Apply positive pressure for approx. 10-15 seconds (or until no liquid remains on top of sorbent).
(Load at 85-100 PSI- Selector to the right)
- 8. Wait 5 minutes.
- 9. Add **2.25mL MTBE. (Add in 3 increments of 750uL)**
- 10. Wait 5 minutes.
- 11. Apply positive pressure for approx. 15 seconds. *(10-15 PSI- Selector to the left).*
- 12. Add **2.25mL Hexane. (Add in 3 increments of 750uL)**
- 13. Wait 5 minutes.
- 14. Apply positive pressure for approx. 15 seconds. *(10-15 PSI- Selector to the left).*
- 15. Remove plate containing eluate. Place on SPE Dry and evaporate to dryness at approx. 35°C.
- 16. Reconstitute in **100µL 100% MeOH** and heat seal plate with foil. Place in autosampler and run worklist.

Post-Analytic

- 1. Create batch and process data.
- 2. Make any necessary integration changes, R² values ≥0.98 for each analyte
- 3. RT +/- 2% or 0.100 min, whichever is greater
- 4. Confirmation testing on case samples with a response for THC and OH-THC of 3ng/mL or greater and/or Carboxy-THC at 10ng/mL or greater (analyst discretion between 5-10ng/mL) may be pursued.
- 5. Did all QCs pass for each analyte? (if not, describe in comments section)
- 6. Central File Packet to include: LIMS Worklist, Method Checklist, Calibration and Control Reports

COMMENTS:

Plate extracted on 12/28/2021 and stored in the freezer overnight. Analyzed on the instrument on 12/29/2021.

THC-OH curve range 3-100 ng/mL

Analytical plate positions

AK

	1	2	3	4	5	6
A	IS + Cal. 1	IS + QC_1	M2021-5619-2	P2021-4169-1	P2021-4193-1	IS + QC_1
B	IS + Cal. 2	Blood Negative	P2021-3682-1	P2021-4170-1	P2021-4194-1	IS + Cal. 7
C	IS + Cal. 3	M2021-5132-2	P2021-4072-1	P2021-4171-1	P2021-4195-1	IS + Cal. 6
D	IS + Cal. 4	M2021-5188-1	P2021-4079-1	P2021-4172-1	P2021-4196-1	IS + Cal. 5
E	IS + Cal. 5	M2021-5396-2	P2021-4080-1	P2021-4175-1	P2021-4203-1	IS + Cal. 4
F	IS + Cal. 6	M2021-5469-2	P2021-4090-1	P2021-4183-1	P2021-4204-1	IS + Cal. 3
G	IS + Cal. 7	M2021-5472-2	P2021-4150-1	P2021-4184-1	P2021-4208-1	IS + Cal. 2
H	IS + QC_1	M2021-5498-2	P2021-4164-1	P2021-4192-1	IS + QC_1	IS + Cal. 1

All wells to contain 100 µl of residual DMSO

SLE and sample plate positions

	1	2	3	4	5	6
A	IS + Cal. 1		M2021-5619-2	P2021-4169-1	P2021-4193-1	M2021-5396-2
B	IS + Cal. 2	Blood Negative	Sample moved due to clot (B6)	P2021-4170-1	P2021-4194-1	P2021-3682-1
C	IS + Cal. 3	M2021-5132-2	P2021-4072-1	P2021-4171-1	P2021-4195-1	P2021-4184-1
D	IS + Cal. 4	M2021-5188-1	P2021-4079-1	P2021-4172-1	P2021-4196-1	
E	IS + Cal. 5	Sample moved due to clot (A6)	P2021-4080-1	P2021-4175-1	P2021-4203-1	
F	IS + Cal. 6	M2021-5469-2	P2021-4090-1	P2021-4183-1	P2021-4204-1	
G	IS + Cal. 7	M2021-5472-2	P2021-4150-1	Sample moved due to clot (C6)	P2021-4208-1	
H	IS + QC_1	M2021-5498-2	P2021-4164-1	P2021-4192-1		

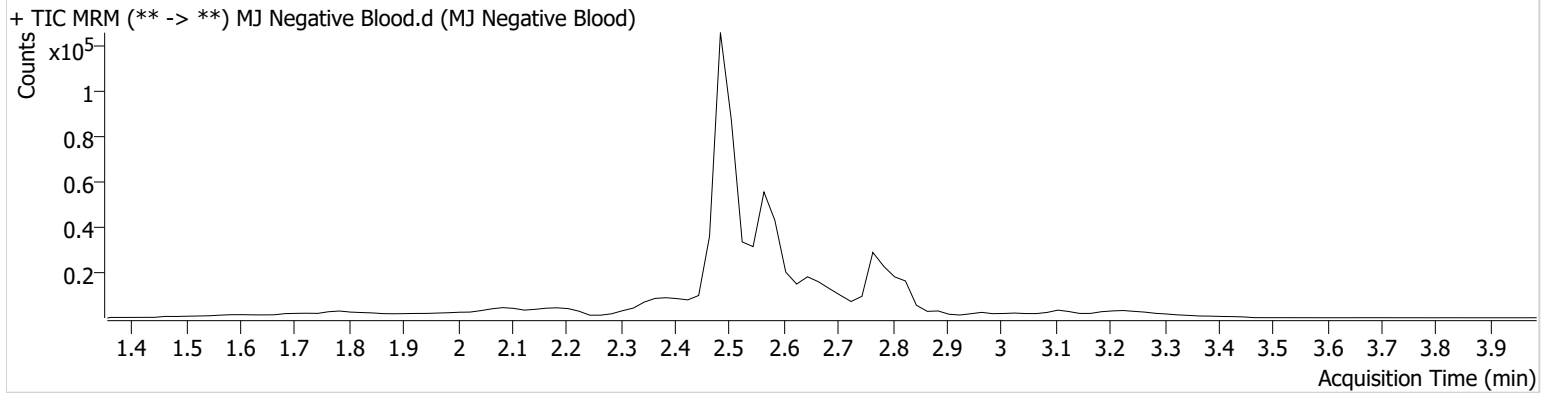
AM #26 Cannabinoids Screen Results



Batch results D:\MassHunter\Data\2021\AM 25-26\122921 AM 25 26 AG\QuantResults\AM 26.batch.bin
Calibration Last Update 1/13/2022 7:57:26 AM

Instrument	Falco (069901)	Data File	MJ Negative Blood.d
Type	Sample	Sample	MJ Negative Blood
Acq. Method	AM 26 THCS.m	Operator	Amber Gerheart
Sample Position	P1-B2	Comment	
Injection Volume	10		
Acq. Date-Time	12/29/2021 7:28:16 PM		
Sample Info.			

Sample Chromatogram



AM #26 Cannabinoids Screen Results

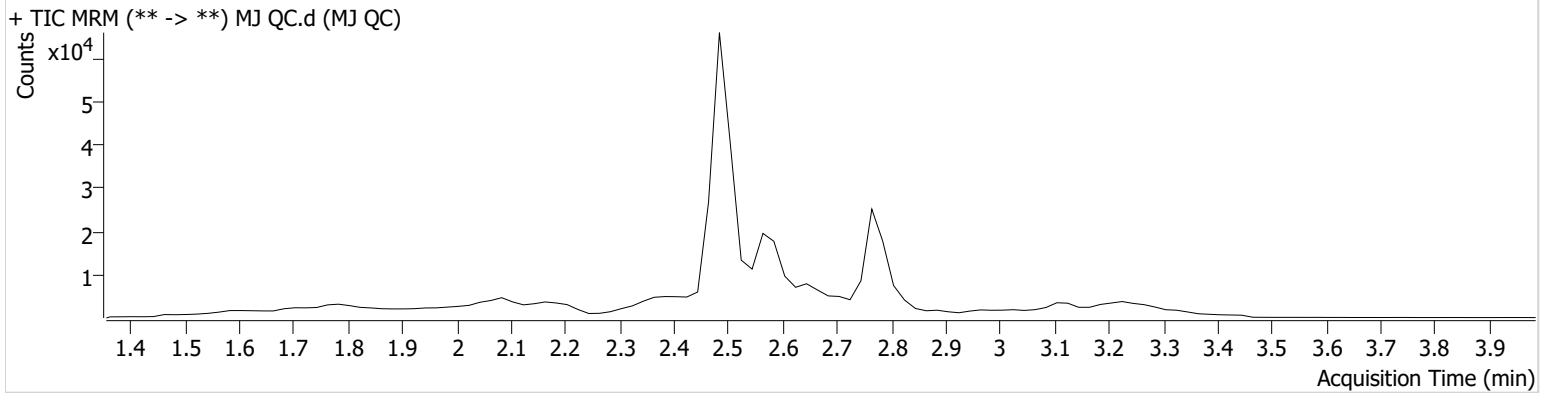


Batch results D:\MassHunter\Data\2021\AM 25-26\122921 AM 25 26 AG\QuantResults\AM 26.batch.bin
Calibration Last Update 1/13/2022 7:57:26 AM

Instrument	Falco (069901)	Data File	MJ QC.d
Type	Sample	Sample	MJ QC
Acq. Method	AM 26 THCS.m	Operator	Amber Gerheart
Sample Position	P1-H1	Comment	
Injection Volume	10		
Acq. Date-Time	12/29/2021 7:15:07 PM		

Sample Info.

Sample Chromatogram



Name	RT	Resp.	ISTD Resp.	Final Conc.
THC	2.819	165	5493	4.0484 ng/ml
THC-COOH	2.587	5932	24616	14.4087 ng/ml
THC-OH	2.494	1078	140167	5.0496 ng/ml

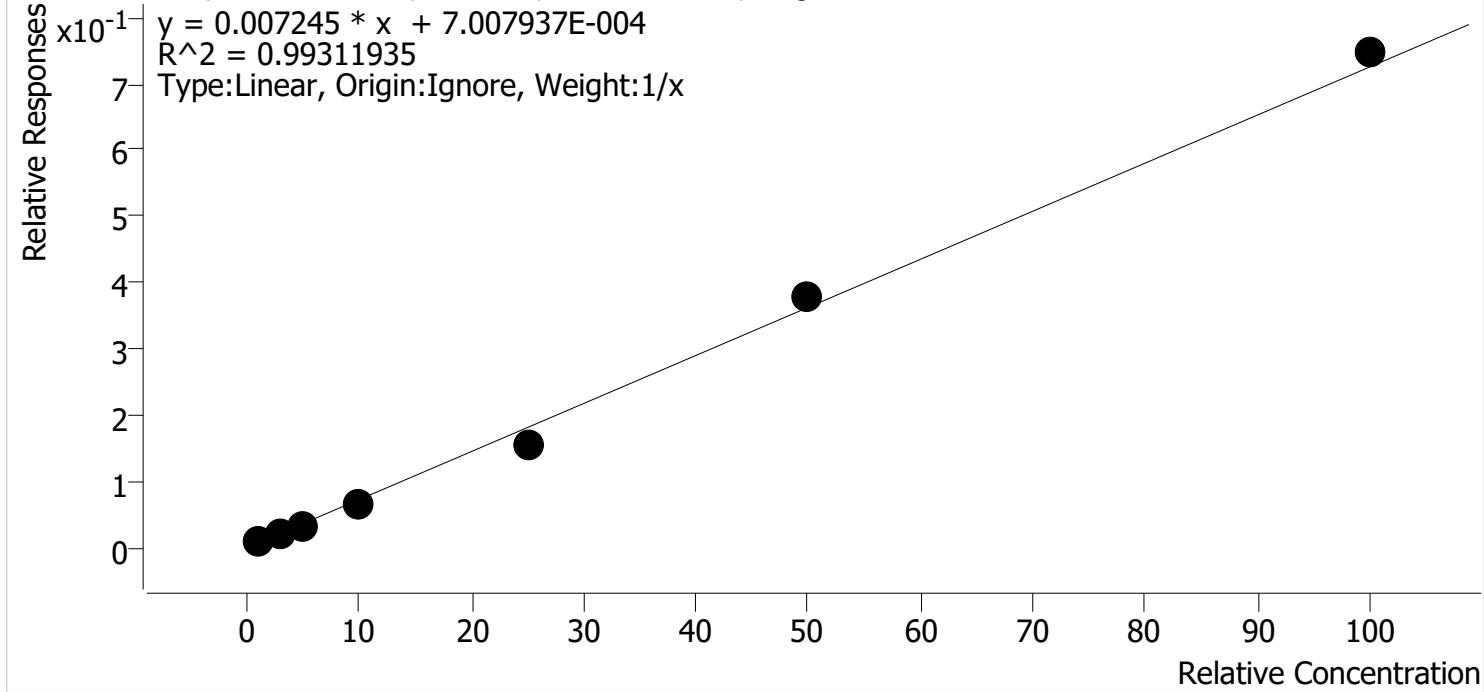
AS



AM #26 Cannabinoids Screen Calibration Curve Report

Batch results D:\MassHunter\Data\2021\AM 25-26\122921 AM 25 26 AG\QuantResults\AM 26.batch.bin
Last Cal. Update 1/13/2022 7:57 AM
Analyst Name ISP\datastor
Analyte THC **Internal Standard** THC-D3

THC - 7 Levels, 7 Levels Used, 7 Points, 7 Points Used, 0 QCs



Sample	Level	Enabled	Expected Concentration	Final Concentration	Accuracy
MJ Cal 1	1	✓	1.0	1.5	145.2
MJ Cal 2	2	✓	3.0	2.5	83.3
MJ Cal 3	3	✓	5.0	4.4	88.4
MJ Cal 4	4	✓	10.0	9.0	89.9
MJ Cal 5	5	✓	25.0	21.5	85.9
MJ Cal 6	6	✓	50.0	52.2	104.5
MJ Cal 7	7	✓	100.0	103.0	103.0

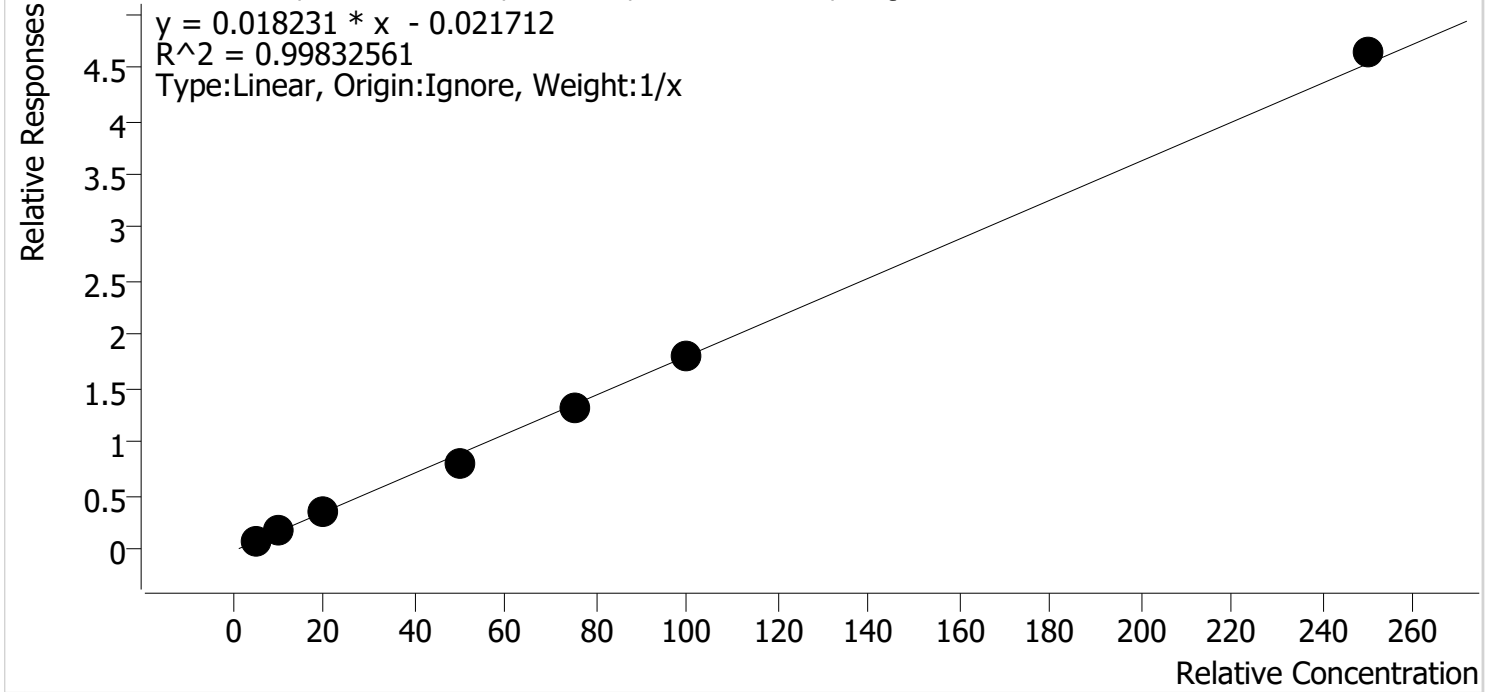
AS



AM #26 Cannabinoids Screen Calibration Curve Report

Batch results D:\MassHunter\Data\2021\AM 25-26\122921 AM 25 26 AG\QuantResults\AM 26.batch.bin
Last Cal. Update 1/13/2022 7:57 AM
Analyst Name ISP\datastor
Analyte THC-COOH **Internal Standard** THC-COOH-D9

THC-COOH - 7 Levels, 7 Levels Used, 7 Points, 7 Points Used, 0 QCs



Sample	Level	Enabled	Expected Concentration	Final Concentration	Accuracy
MJ Cal 1	1	✓	5.0	5.3	105.3
MJ Cal 2	2	✓	10.0	10.7	107.0
MJ Cal 3	3	✓	20.0	19.3	96.3
MJ Cal 4	4	✓	50.0	45.7	91.4
MJ Cal 5	5	✓	75.0	72.9	97.2
MJ Cal 6	6	✓	100.0	100.6	100.6
MJ Cal 7	7	✓	250.0	255.6	102.2

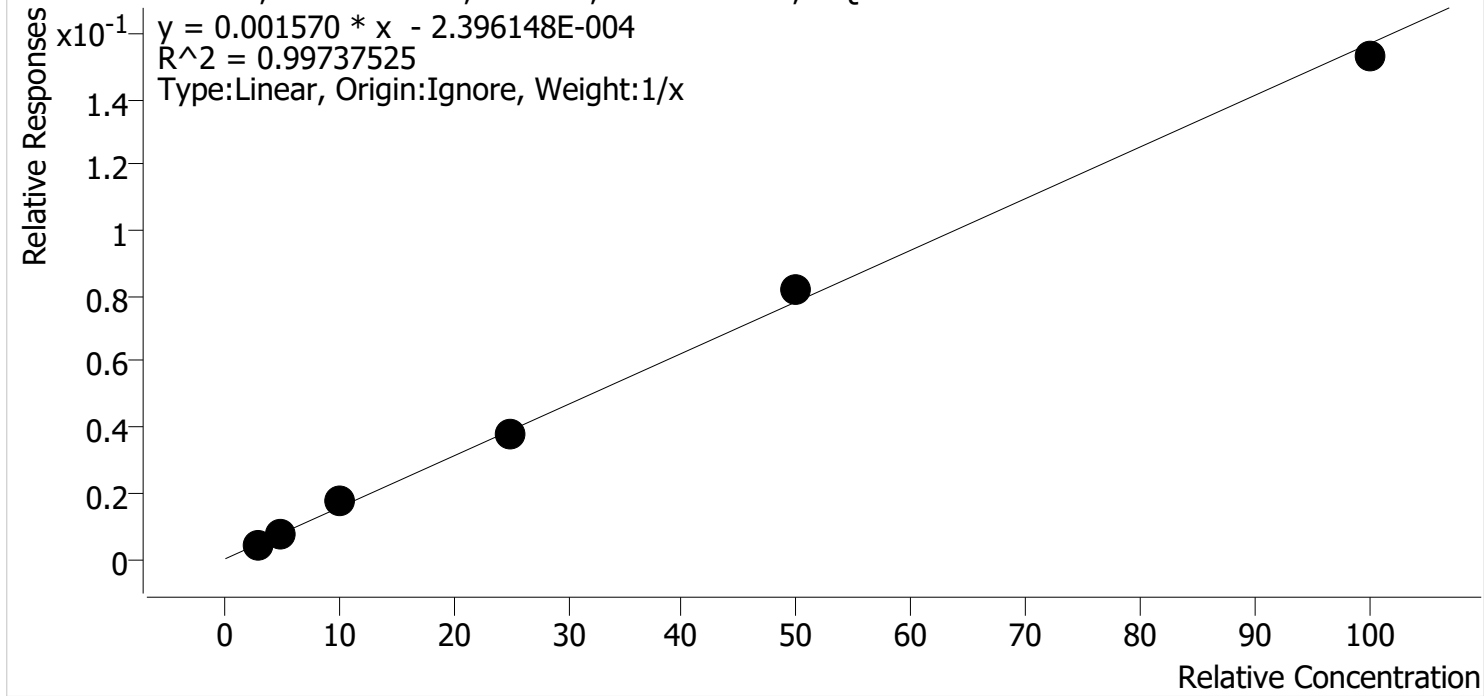
AS



AM #26 Cannabinoids Screen Calibration Curve Report

Batch results D:\MassHunter\Data\2021\AM 25-26\122921 AM 25 26 AG\QuantResults\AM 26.batch.bin
Last Cal. Update 1/13/2022 7:57 AM
Analyst Name ISP\datastor
Analyte THC-OH **Internal Standard** THC-OH-D3

THC-OH - 6 Levels, 6 Levels Used, 6 Points, 6 Points Used, 0 QCs



Sample	Level	Enabled	Expected Concentration	Final Concentration	Accuracy
MJ Cal 2	2	✓	3.0	2.9	95.7
MJ Cal 3	3	✓	5.0	4.6	92.2
MJ Cal 4	4	✓	10.0	11.2	112.0
MJ Cal 5	5	✓	25.0	24.4	97.8
MJ Cal 6	6	✓	50.0	52.4	104.8
MJ Cal 7	7	✓	100.0	97.5	97.5

Calibrator 1 dropped because it was under the integration parameters.

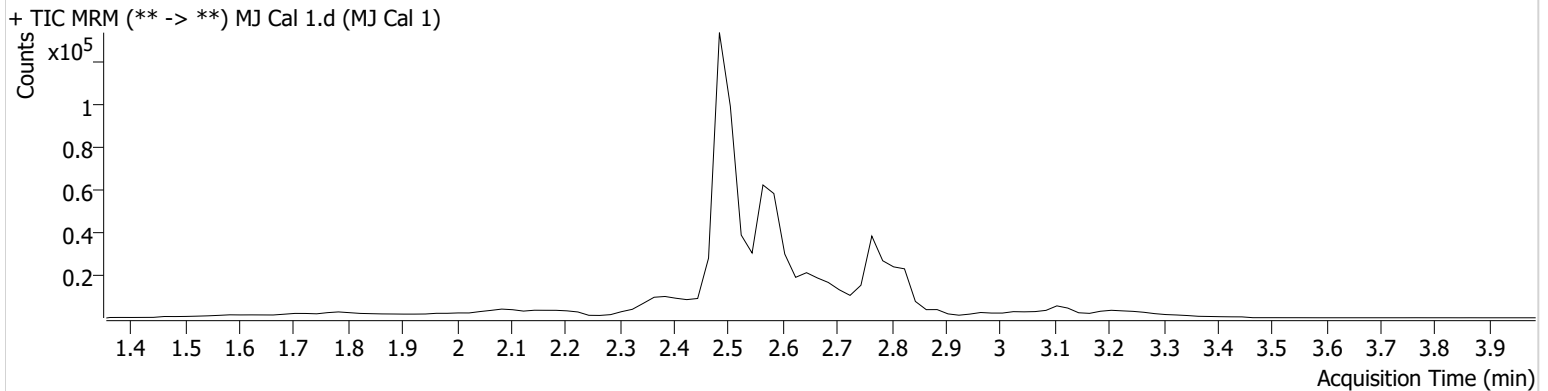
AM #26 Cannabinoids Screen Results



Batch results D:\MassHunter\Data\2021\AM 25-26\122921 AM 25 26 AG\QuantResults\AM 26.batch.bin
Calibration Last Update 1/13/2022 7:57:26 AM

Instrument	Falco (069901)	Data File	MJ Cal 1.d
Type	Cal	Sample	MJ Cal 1
Acq. Method	AM 26 THCS.m	Operator	Amber Gerheart
Sample Position	P1-A1	Comment	
Injection Volume	10		
Acq. Date-Time	12/29/2021 6:29:00 PM		

Sample Chromatogram



Name	RT	Resp.	ISTD Resp.	Final Conc.	
THC	2.819	433	38559	1.4524 ng/ml	Low
THC-COOH	2.587	5789	77930	5.2658 ng/ml	

AM #26 Cannabinoids Screen Results

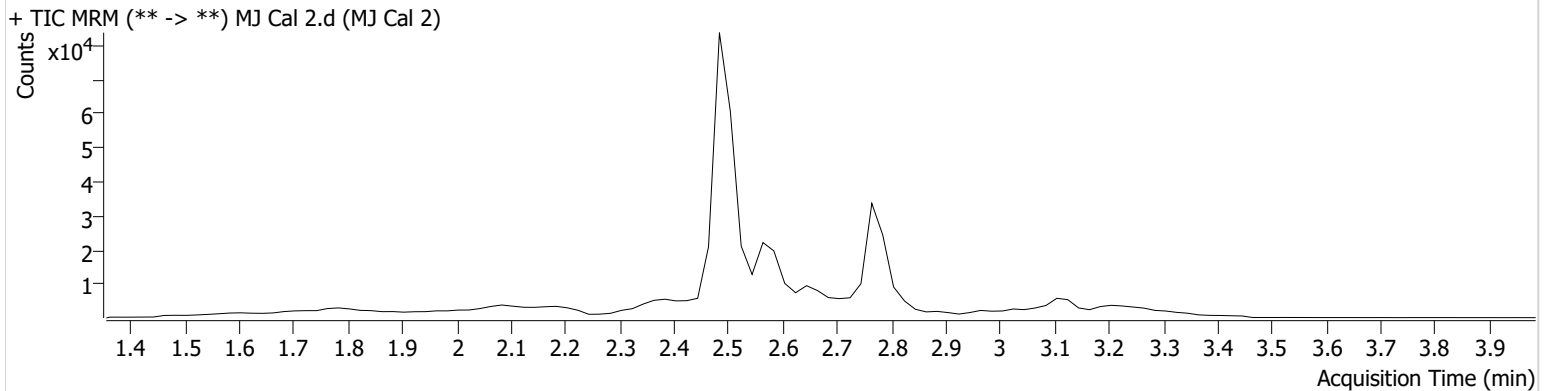


Batch results D:\MassHunter\Data\2021\AM 25-26\122921 AM 25 26 AG\QuantResults\AM 26.batch.bin
Calibration Last Update 1/13/2022 7:57:26 AM

Instrument	Falco (069901)	Data File	MJ Cal 2.d
Type	Cal	Sample	MJ Cal 2
Acq. Method	AM 26 THCS.m	Operator	Amber Gerheart
Sample Position	P1-B1	Comment	
Injection Volume	10		
Acq. Date-Time	12/29/2021 6:35:44 PM		

Sample Info.

Sample Chromatogram



Name	RT	Resp.	ISTD Resp.	Final Conc.	
THC	2.819	103	5493	2.4975 ng/ml	Low
THC-COOH	2.587	4873	28119	10.6962 ng/ml	
THC-OH	2.494	829	194101	2.8716 ng/ml	Low

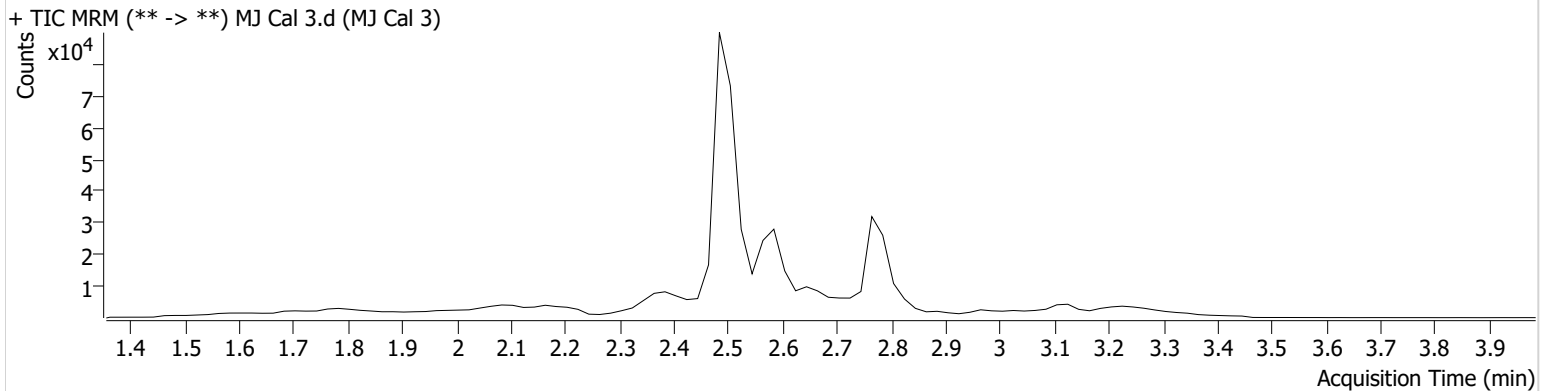
AM #26 Cannabinoids Screen Results



Batch results D:\MassHunter\Data\2021\AM 25-26\122921 AM 25 26 AG\QuantResults\AM 26.batch.bin
Calibration Last Update 1/13/2022 7:57:26 AM

Instrument	Falco (069901)	Data File	MJ Cal 3.d
Type	Cal	Sample	MJ Cal 3
Acq. Method	AM 26 THCS.m	Operator	Amber Gerheart
Sample Position	P1-C1	Comment	
Injection Volume	10		
Acq. Date-Time	12/29/2021 6:42:18 PM		

Sample Chromatogram



Name	RT	Resp.	ISTD Resp.	Final Conc.
THC	2.839	211	6451	4.4183 ng/ml
THC-COOH	2.587	10396	31552	19.2643 ng/ml
THC-OH	2.494	1523	217516	4.6115 ng/ml

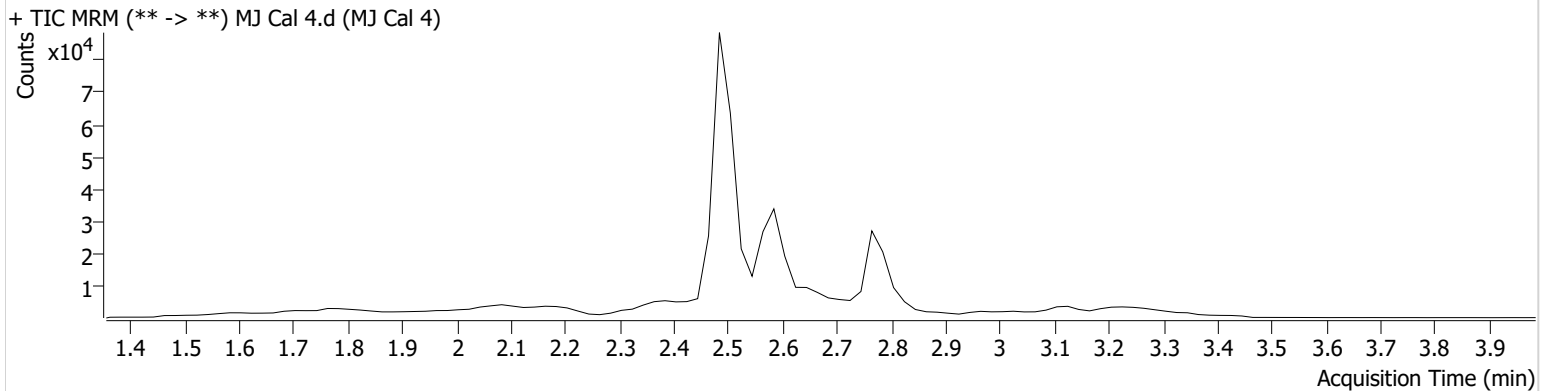
AM #26 Cannabinoids Screen Results



Batch results D:\MassHunter\Data\2021\AM 25-26\122921 AM 25 26 AG\QuantResults\AM 26.batch.bin
Calibration Last Update 1/13/2022 7:57:26 AM

Instrument	Falco (069901)	Data File	MJ Cal 4.d
Type	Cal	Sample	MJ Cal 4
Acq. Method	AM 26 THCS.m	Operator	Amber Gerheart
Sample Position	P1-D1	Comment	
Injection Volume	10		
Acq. Date-Time	12/29/2021 6:48:51 PM		

Sample Chromatogram



Name	RT	Resp.	ISTD Resp.	Final Conc.
THC	2.819	403	6120	8.9875 ng/ml
THC-COOH	2.587	22124	27270	45.6920 ng/ml
THC-OH	2.494	3263	188136	11.1968 ng/ml

AM #26 Cannabinoids Screen Results

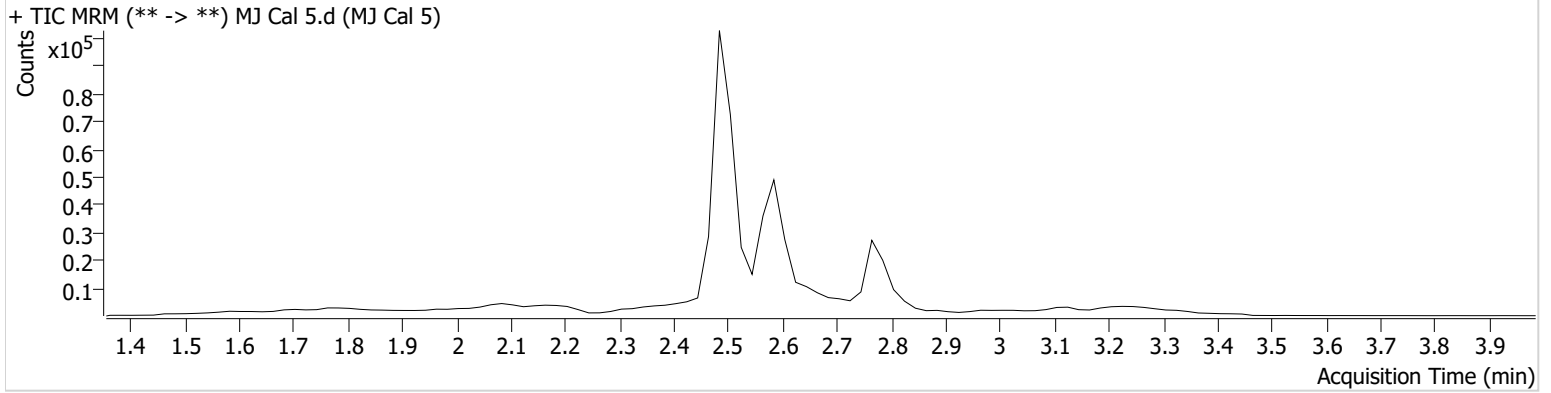


Batch results D:\MassHunter\Data\2021\AM 25-26\122921 AM 25 26 AG\QuantResults\AM 26.batch.bin
Calibration Last Update 1/13/2022 7:57:26 AM

Instrument	Falco (069901)	Data File	MJ Cal 5.d
Type	Cal	Sample	MJ Cal 5
Acq. Method	AM 26 THCS.m	Operator	Amber Gerheart
Sample Position	P1-E1	Comment	
Injection Volume	10		
Acq. Date-Time	12/29/2021 6:55:25 PM		

Sample Info.

Sample Chromatogram



Name	RT	Resp.	ISTD Resp.	Final Conc.
THC	2.819	1000	6400	21.4663 ng/ml
THC-COOH	2.587	37782	28899	72.9038 ng/ml
THC-OH	2.494	7157	187605	24.4473 ng/ml

AM #26 Cannabinoids Screen Results

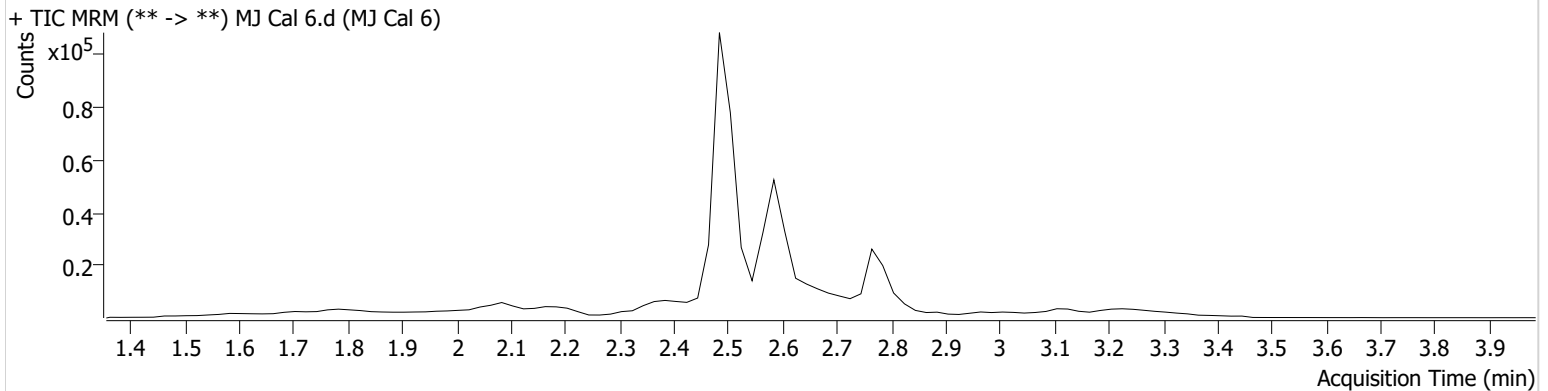


Batch results D:\MassHunter\Data\2021\AM 25-26\122921 AM 25 26 AG\QuantResults\AM 26.batch.bin
Calibration Last Update 1/13/2022 7:57:26 AM

Instrument	Falco (069901)	Data File	MJ Cal 6.d
Type	Cal	Sample	MJ Cal 6
Acq. Method	AM 26 THCS.m	Operator	Amber Gerheart
Sample Position	P1-F1	Comment	
Injection Volume	10		
Acq. Date-Time	12/29/2021 7:01:59 PM		

Sample Info.

Sample Chromatogram



Name	RT	Resp.	ISTD Resp.	Final Conc.
THC	2.819	1963	5177	52.2277 ng/ml
THC-COOH	2.587	45609	25174	100.5682 ng/ml
THC-OH	2.494	12901	157178	52.4203 ng/ml

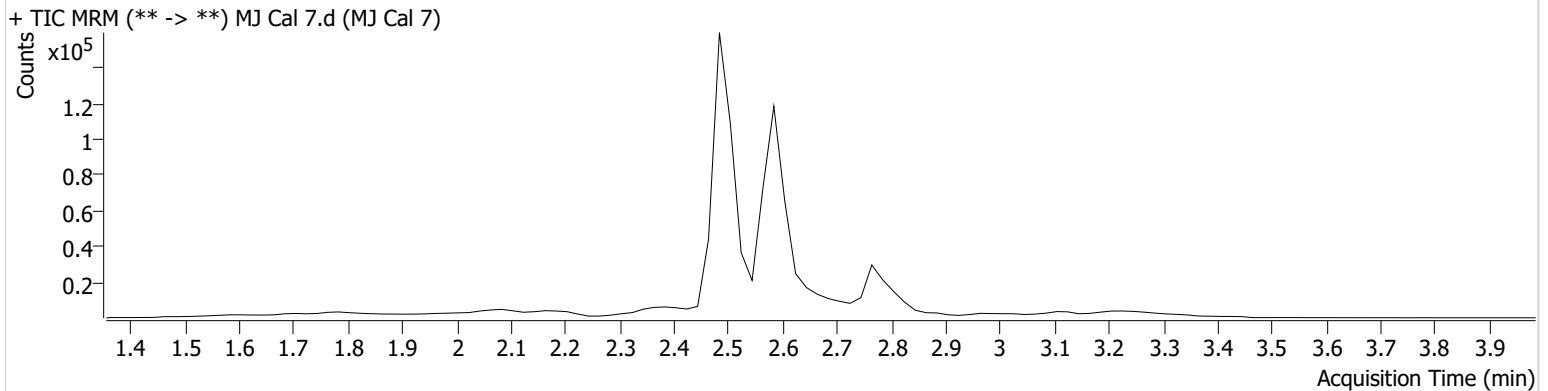
AM #26 Cannabinoids Screen Results



Batch results D:\MassHunter\Data\2021\AM 25-26\122921 AM 25 26 AG\QuantResults\AM 26.batch.bin
Calibration Last Update 1/13/2022 7:57:26 AM

Instrument	Falco (069901)	Data File	MJ Cal 7.d
Type	Cal	Sample	MJ Cal 7
Acq. Method	AM 26 THCS.m	Operator	Amber Gerheart
Sample Position	P1-G1	Comment	
Injection Volume	10		
Acq. Date-Time	12/29/2021 7:08:33 PM		

Sample Chromatogram



Name	RT	Resp.	ISTD Resp.	Final Conc.
THC	2.819	5289	7084	102.9503 ng/ml
THC-COOH	2.587	120751	26033	255.6098 ng/ml
THC-OH	2.494	27908	182644	97.4525 ng/ml